



April 17, 2018

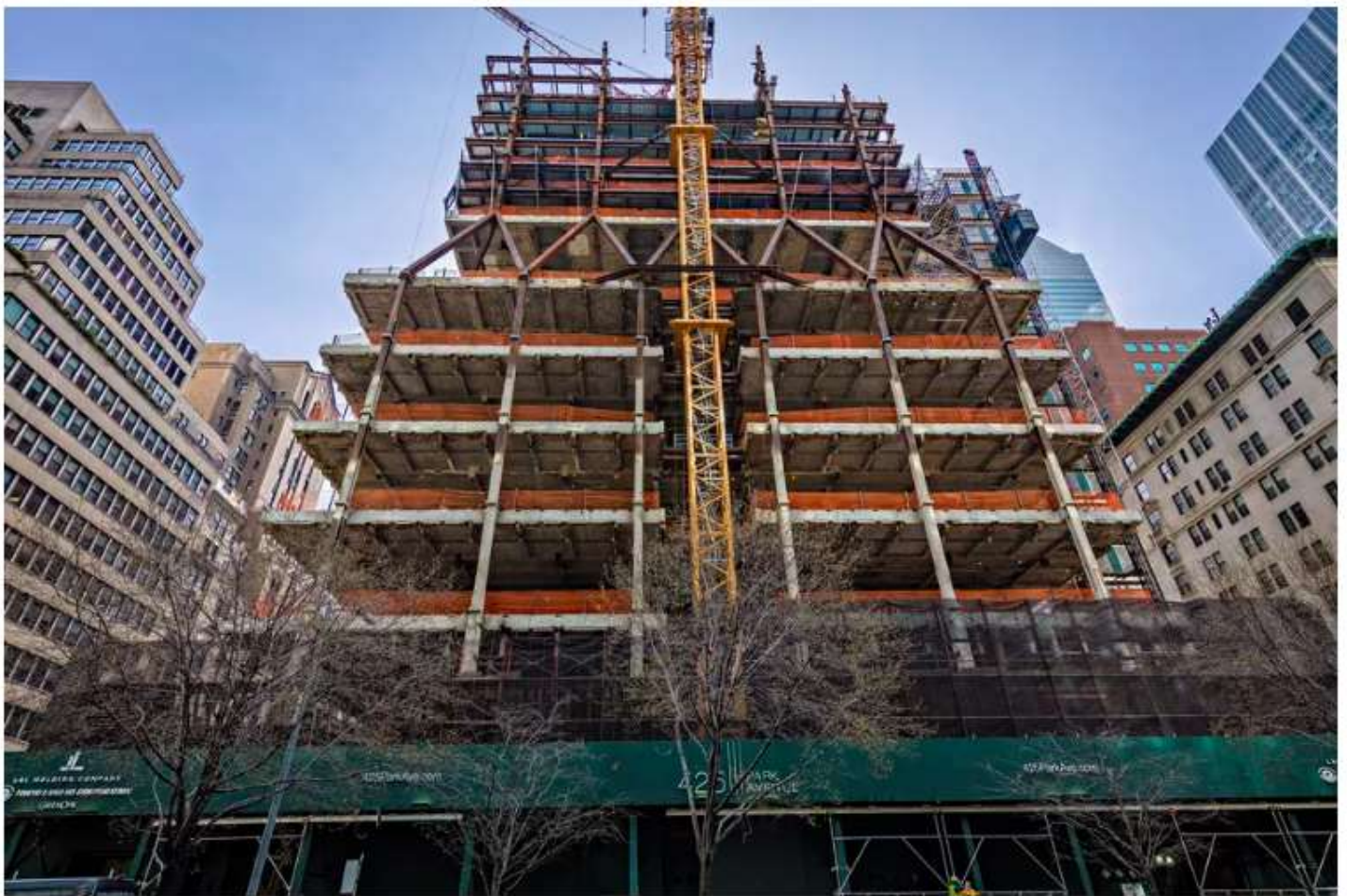
[Link to Article](#)

MIDTOWN EAST

NYC CONSTRUCTION NEWS

Norman Foster's Park Avenue office tower is now halfway to its pinnacle

Construction on the soon-to-be 47-story building has now reached the 27th floor



Alan Schindler

By [Ameena Walker](#)

It's been a few months since we [last checked in](#) on the Norman Foster-designed office building rising across from 432 Park Avenue, but construction on 425 Park Avenue has hit a few milestones since last September and the building's height has now past the halfway mark for its projected 900-foot-tall rise and the diagrid floor is beginning to come into focus.

The soon-to-be 47-story building's concrete core has now reached the 27th floor with steel going up on the 23rd and 24th floors. By June, the building will begin receiving its curtain wall.

The full-block office development will feature a seven-story base, office floors that will be “intersected by dramatic triple-height sky gardens,” and amenity spaces that will include bars and cafes.

Global financial firm Citadel [has leased 200,000 square feet](#) of space at the tower, and Daniel Humm and Will Guidara of Eleven Park Madison notoriety [will open a restaurant](#) at the building's base.

Completion is scheduled for the latter part of 2019, which will be followed by a grand opening.

